



# Princes Risborough



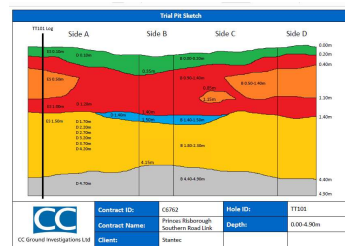
Client	Stantec UK Ltd
Date	July 2020
Programme	Two weeks
Value	£46k
Role	Site Investigation Contractor
Works undertaken	RC, WS, TPs, trial trench, BRE365 soakaways, permeability testing, DCPs, geotech and geoenvironl lab testing, GW monitoring & sampling
Geology	West Melbury Marly Chalk
Deliverables	Factual report and AGS data

land and road closures maintaining safe access for pedestrians and local use vehicles.

Further the underlying geology of the proposed road was varied and included West Melbury Marly Chalk Formation with the Glauconitic Marl Member and the Upper Greensand Formation at depth. Alluvium was also recorded and there was the likelihood of Made Ground associated with the previous and existing developments of the Site.

### The Contract

A ground investigation was required to support the delivery of anew link road including replacement of a railway bridge, carriageway improvements and new junctions and signals.



### The Solution

To manage stakeholder expectations, CCGI provided a detailed programme ahead of the works. Lay down areas and traffic management plans were put forward to phase site works such that they caused minimum disruption.



### The Challenge

The challenge was to safely complete the scope of works using a CCGI multi-purpose drilling rig and a dynamic sampling rig, along with machine excavated trial pits, within both privately owned



Using full time CCGI engineers to supervise the site activities and maintaining liaison with the landowners and the Engineer, delays to the project were avoided.

